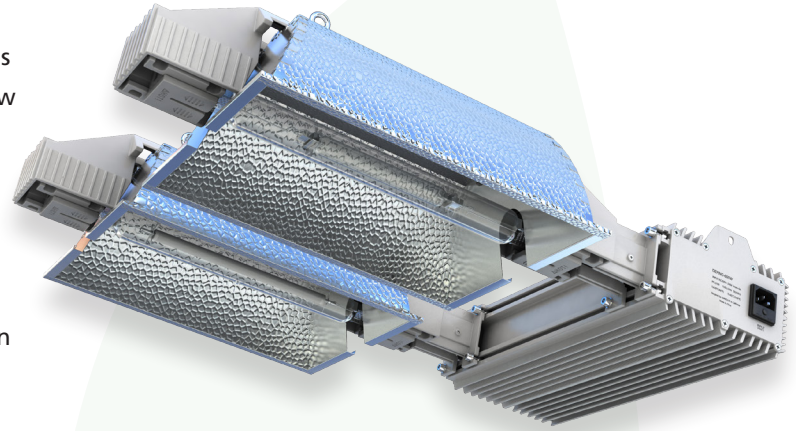
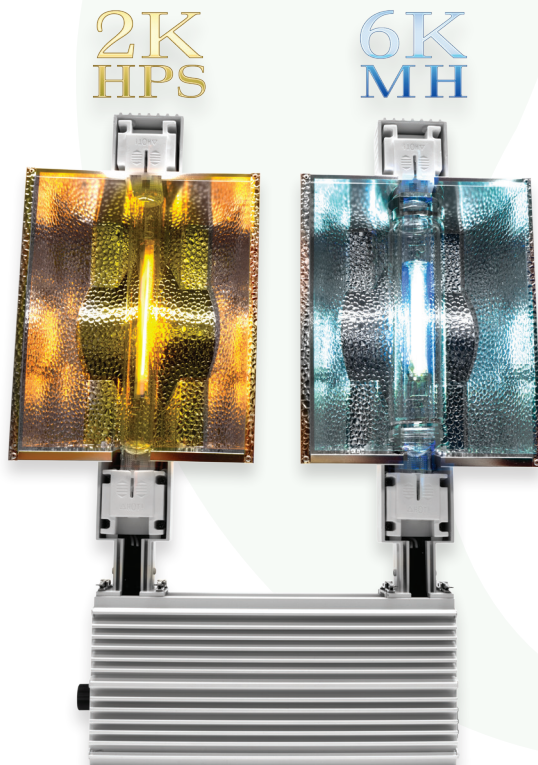
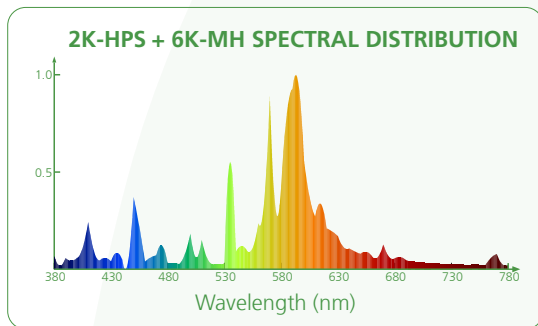


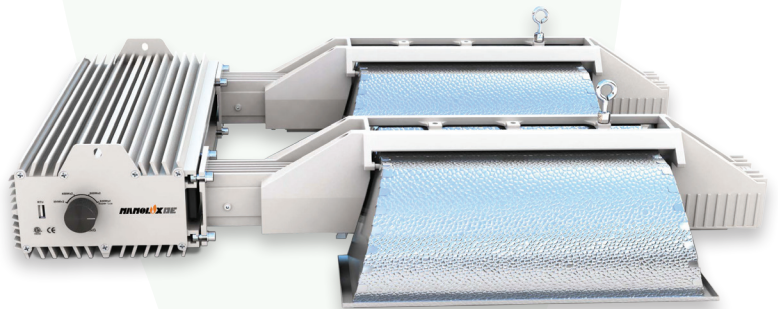
With the New Nanolux DE Dual fixture (600Wx2), we have split our 1200W DE into two 600W lamp outputs. This allows the fixture to run both a 2K DE HPS lamp and our brand new double jacketed 6K MH DE lamp, or the optional 4K MH DE lamp (sold separately).

This dual lamp combination provides a spectrum that is unmatched by any other existing HID technology currently on the market. The spectral output of the 6K DE MH lamp in combination with the 2K DE HPS lamp provides additional blue light that benefits your plant.

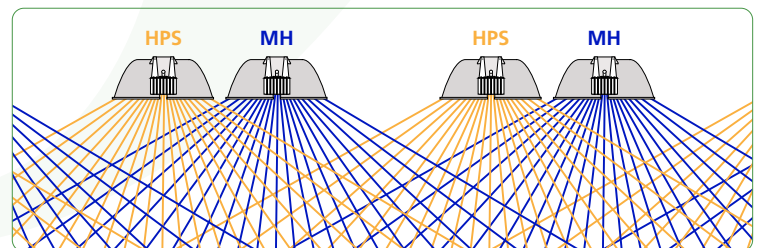
This fixture provides a very comprehensive PAR spectrum while pumping out 1200W of the most powerful light. Use any combination of DE lamps to create the spectrum the plants desire!



This fixture is commercial grade in its design quality and durability. The Nanolux DE Dual Fixture (600Wx2) is NCCS ready. NCCS (Nanolux Cloud Control System) is one of the many technologically advanced features offered exclusively by Nanolux. With NCCS, you will be able to control up to 999 lights on your computer. Like all Nanolux ballasts, the DE Dual Fixture comes with random start technology. Random start uses an algorithm that will start the ballast within a 0-15 second window. This allows for less initial power draw when using multiple ballasts.

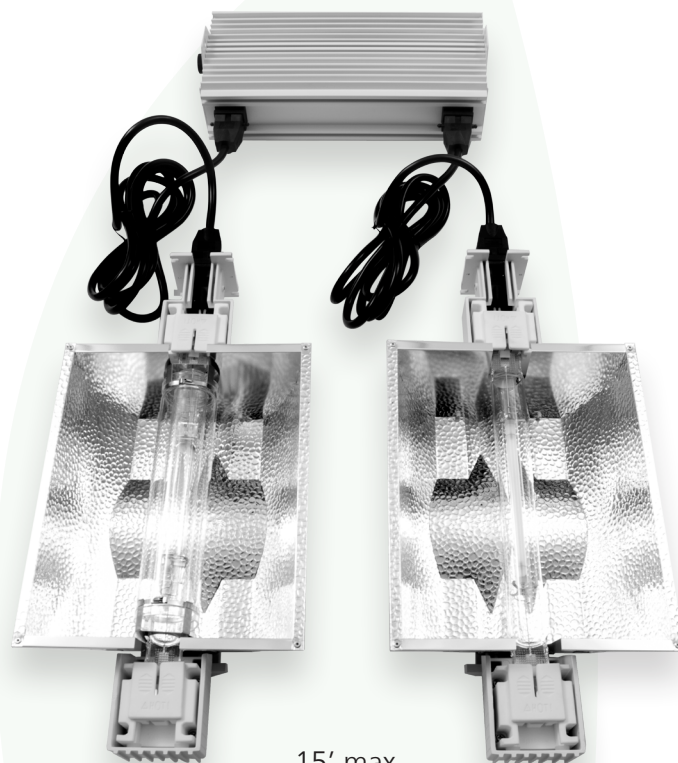


Layout of the lamps must be the same for each fixture. For example, HPS lamp in left socket and MH lamp in right socket. This is to be the same for all fixtures running. This ensures proper mixing of spectral output to make an even overlapping light pattern in commercial applications.



- NCCS ready - DTU and RTU sold separately
- Best commercial fixture in its class for light uniformity reflector
- Multiple dimming options
 - 300Wx2, 450Wx2, 600Wx2, 630Wx2
- These units include two DE Lamps
 - 600W 2K HPS & 600W 6K double jacketed MH Lamp
- Patented and exclusive ceramic receptacles (no melting plastic)
- Compatible with all DE Lamps
 - (only use lamps rated for open luminaires)
- Slow soft start, open circuit and low voltage protection
- 3 Year warranty on fixtures and 1 year warranty on lamp
- Input voltage 208/220/240Vac, 6 AMP max draw
- Input frequency 50/60Hz – output frequency 85-105kHz
- THD <10%, PF > .99, CF <1.7, -Ta = 30°C (86°F), Tc = 65°C (149°F)
- Weight 17.8 lbs
- Dimensions 13.9"X26.1"X4.1"
- Sealed ballast enclosure - NO FAN
- BTU output of fixture
 - 1200W – 5040BTU

Ballast & fixture separate for remote installation



15' max
* lamp cords sold separately *

NCCS COMPATIBLE



NANOLUX CLOUD CONTROL SYSTEM

The Nanolux Cloud Control System was designed and engineered to provide a complete solution for the control of the lighting and environmental controls of a grow room. The NCCS system allows for precision control of all devices in a grow room through its simple and intuitive computer software program. At the heart of the NCCS is a software program which allows you to specify all of the parameters of your lighting and environmental control settings in your room. The program is then downloaded from your computer to the DTU (DATA TRANSFER UNIT). The DTU is the brain of the system which communicates and controls all of the selected functions in the grow room. A WPAN (WIRELESS PERSONAL AREA NETWORK) is created to communicate with the individual RTU (REMOTE TERMINAL UNIT) USB devices (BALLASTS, DOSER, ETC). The NCCS system currently allows for precision control of your lighting system, with features such as dimming, multiple zones, high-temperature dimming along with fan control. The NCCS will be adding CO₂ functions, humidity and temperature control, pH and nutrient control, pump control and remote camera features in the near future.