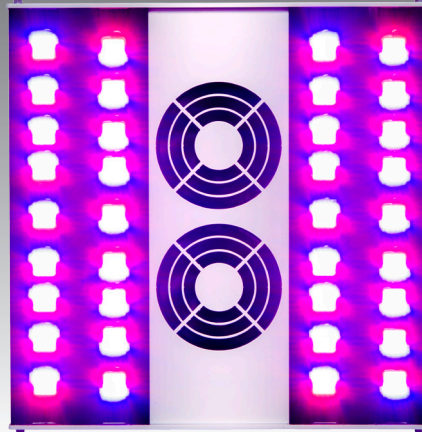
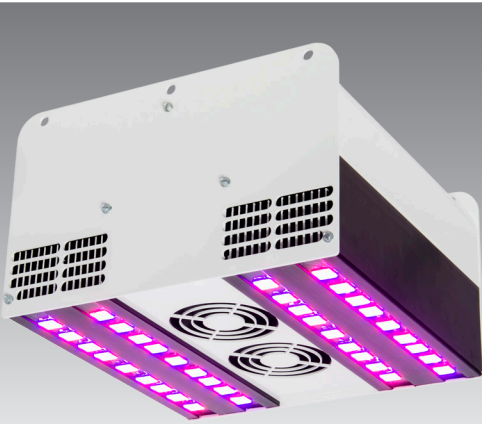


# powerPAR® Greenhouse LED Fixture



## Overview

The powerPAR® Greenhouse LED fixture is available in three power variations, (185W, 390W and 530W). It delivers a higher PPFD per watt value to the plant canopy than any other LED greenhouse fixture available. Scientifically developed horticultural growth spectra, and proprietary patented optics ensure that nearly every single watt of energy is used for optimum plant growth and the highest yields.

## Features

- all aluminum construction with white gloss finish protects against corrosion in humid environments
- provides a minimum power factor of 0.90 and less than 20% total harmonic distortion
- patented Digital Distribution™ optical technology ensures that 65% of the light emitted is contained within the 50° beam angle
- two-part, high-temperature silicone potting protects LED and wiring connections from moisture
- dual, replaceable, high-efficiency cooling fans
- powered by Illumitex™ technology
- high delivering spectrum for both vegetative and flowering stages
- ETL/cETL listed for damp locations
- 50,000 hour life to L70
- Made in USA
- 5-year warranty

## Includes

- 8' power cord and 6-15P plug
- 240 standard  
- operates 120-277 input

## Applications

- greenhouse supplemental light
- research lighting
- propagation

## Optional Items

- Chain hanging kit (LGRHK)
- C-brackets for structure hanging

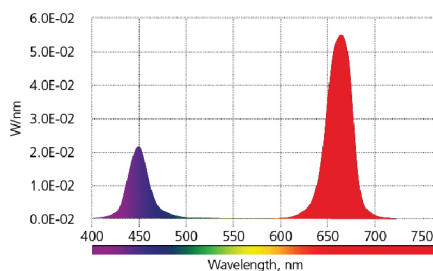
# powerPAR® Greenhouse LED Fixture

## Product Specifications

ITEM CODE	DESCRIPTION	INPUT VOLTAGE	WATTS	PPF	UMOL/J	SPECTRUM	WEIGHT	DIMENSIONS
ILP200	powerPAR® 200	240-277	185	350	1.9	F1	19 lbs	12" x 12" x 7.33"
ILP400	powerPAR® 400	240-277	390	690	1.8	F1	22 lbs	12" x 12" x 7.33"
ILP600	powerPAR® 600	240-277	530	1020	1.9	F1	25 lbs	12" x 12" x 7.33"
ILP6120	powerPAR® 200	120	185	350	1.9	F1	19 lbs	12" x 12" x 7.33"
ILP4120	powerPAR® 400	120	390	690	1.8	F1	22 lbs	12" x 12" x 7.33"
ILP2120	powerPAR® 600	120	530	1020	1.9	F1	25 lbs	12" x 12" x 7.33"

## Spectrum

### F1 SPECTRUM



### GENERAL PURPOSE, HIGH EFFICIENCY

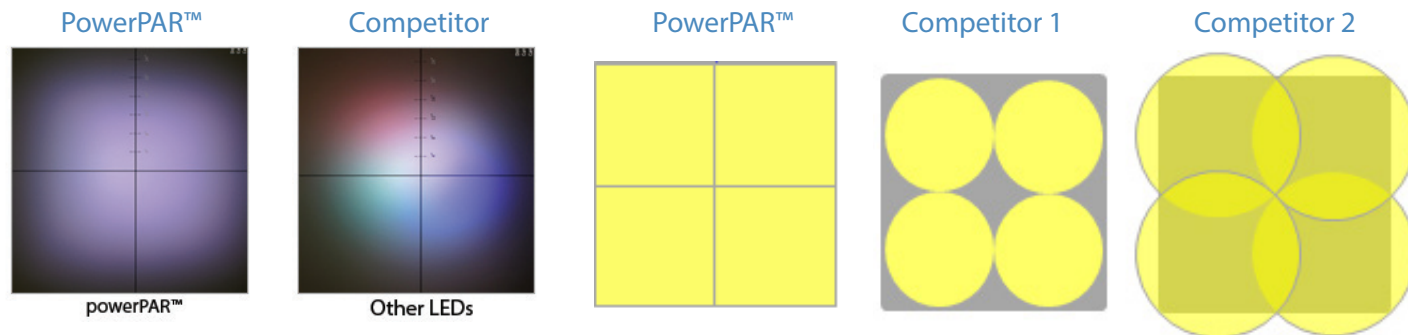
The F1 spectrum is suitable for a variety of plant species throughout their growth cycle. It contains a high proportion of red light, which spurs photosynthesis during the vegetative growth stage and facilitates the flowering stage. It has the highest photon yield efficacy of all custom Surexi™ spectra.

### F1 WAVELENGTH MIX

Blue (400 - 499nm)	22.8%
Green (500 - 599nm)	0.3%
Red (600 - 699nm)	76.8%
Far Red (700 - 780nm)	0.1%

## Advanced Uniformity Through Technology

The Digital Distribution™ optical technology ensures higher uniformity compared to standard LED technology. As a result, the fixture delivers maximum PPF evenly to the targeted areas, eliminating wasted light.



The patented optic design controls the beam angle to provide perfect edge-to-edge color and light uniformity.

The square array design directs light into precise beams providing a higher light distribution pattern to the targeted area.