

REPELS BATS
Attics • Crawl Spaces • Wall Voids • Shutters • Blinds and other confined spaces



REPELS BATS

All natural ingredients.
 Lasts for weeks.

4 READY TO USE PLACE PACKS

ACTIVE INGREDIENTS
 Peppermint Oil 2.00%
 Spearmint Oil 2.00%
INERT INGREDIENTS 96.00%
 Corn Cobs
TOTAL..... 100.00%



KEEP OUT OF REACH OF CHILDREN
CAUTION (See Back Panel for Additional Precautions.)
NET CONTENTS 4 - 0.5 oz. (14.17g) Place packs **Net Wt. 2 oz. (56.7g)**

Bonide Products, Inc.
 6301 Suttiff Road
 Oriskany, NY 13424



REPELS BATS
Attics • Crawl Spaces • Wall Voids • Shutters • Blinds and other confined spaces



Naturally Drive Bats From:
 • Attics • Wall Voids • Shutters
 • Crawl Spaces • Vents
 • Soffits
 • Blinds • Sheds
 • Chimneys

Bonide® Bat Magic™ Bat Repellent
 Bonide® Bat Magic™ Bat Repellent effectively repels bats from around your home. Use to drive bats from confined areas such as attics, wall voids, crawl spaces, behind blinds, siding and shutters, eaves, soffits, chimneys, gable vents, sheds, louvers, ridge vents and other dark quiet, confined spaces bats prefer to roost in. Bonide® Bat Magic™ Bat Repellent is biodegradable. This product is exempt from registration with the Federal EPA under section 25(b) of FIFRA, and as such, is not registered with the Environmental Protection Agency. Bonide represents that this product and its ingredients qualify for exemption from registration under FIFRA.

How It Works
 The unique nature of the ingredients in this product interfere with chemoreception and the functions of a bats stensons canal. This balanced blend of natural, essential oils humanely provides maximum repellency without harm to bats, other animals or the environment.

How to Use
Indoor Use
 Bats are generally harmless and even helpful in keeping insect populations down. However, their urine and guano may cause foul odors and their squeaking, rustling and scratching can be very annoying. Simply put, these creatures just don't belong in the home. Bonide® Bat Magic™ Bat Repellent is packaged in convenient "place packs" that can be easily placed, tossed or tacked wherever needed. Begin treatment by using one place pack per 150 sq. ft. Increase the number of place packs as needed until the desired results are obtained. Heavier infestations may require more place packs. While Bonide® Bat Magic™ Bat Repellent contains natural essential oils and it's odor is very pleasant, too many place packs in a small area can be over powering. Should this occur, simply reduce the number of place packs used.
Helpful Hints: Once bats choose a place to roost, they will continually return there. For this reason, it is important to seal off entrances after bats depart. Leaving lights on in infested areas also encourages bats to stay away. If a bat is inside the living quarters of your home, restrict it to one room if possible, open doors and/or windows and turn lights off, the bat will eventually find it's own way out.

NOTE: Do not apply to furniture, painted surfaces or fine finishes without testing on a small inconspicuous area first.

First Aid
 Product can cause moderate eye irritation. For certain individuals, skin irritation may occur. In case of eye contact, flush with plenty of water. In case of skin irritation, wash area thoroughly with soap and water. Seek medical attention if irritation persists.

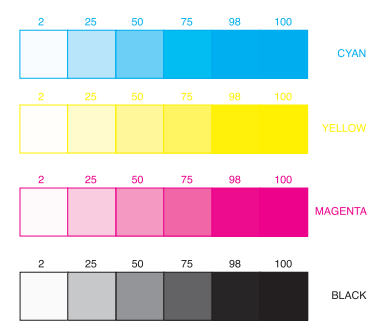
Storage and Disposal: Store and transport in an upright position. Store only in original container, in a dry place inaccessible to children and pets. Do not reuse empty container. Discard empty container in trash.

Other Precautions: Do not apply directly to water.
NOTICE: Buyer assumes all responsibility for safety and use not in accordance with label directions.

PROOF
 Job# 42357 P.O.# 75398
 Company Bonide Products
 Date Submitted.....Date Returned.....
 Approved By.....
 Further Changes Necessary.....
 Remarks:.....
IMPORTANT NOTICE
 Final approval is your (you the customer's) responsibility. Please check for all possible errors before signing off on this proof. The Mid-York Press, Inc. will not be responsible for undetected production errors if the work is printed per the customer's approval or if requests for changes are communicated orally.

The Mid-York Press, Inc.

Note: PMS Spot colors on Matchprint proof may or may not be accurate to Pantone Matching System.
 2/18/04



MY-3956 (4-3/8 x 1-3/4 x 6 w/15/16" Header)
 Prints: 4 color process
 and
 Spot Aqueous
 (void for glue only)