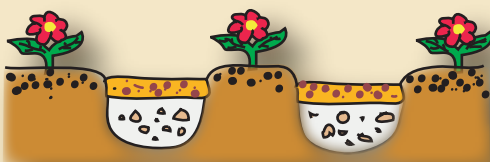




Transferring the Happy Farmer™ Fermented Compost into the Soil

With Happy Farmer™ Kitchen Composter & Happy Farmer™ Bokashi

For your vegetable & flower garden



Dig a trench 6-12 inches deep to bury the compost and cover it with 3 inches of soil.

In between beds, the distance between the plant and Happy Farmer™ fermented compost should be 8 inches.

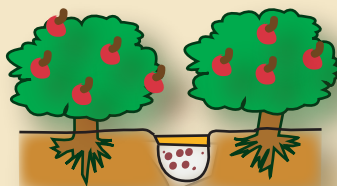
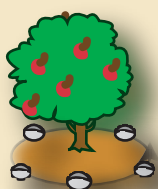


Do not plant seed or transplant seedlings for a least one week after burying the Happy Farmer™ fermented compost.



Happy Farmer™ fermented kitchen will break down approximately 2 weeks in the summer and one month in the winter time.

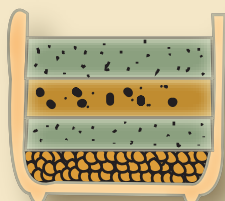
For trees



Dig holes about 8-12 inches deep around the tree and than 2 feet apart cover with 3 inches of soil

Using planters

How to layer the soil in the planter



- Soil
- Happy Farmer™ fermented compost
- Soil
- Gravel

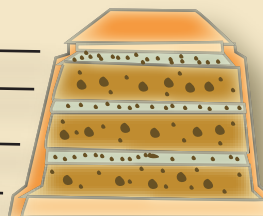


Cover with a plastic sheet

Make sure that the planter has a good drainage! To maximize drainage, place about 1 1/2 inches of gravel in the bottom of the planter. Fill 1/3 of container with potting soil. Add Happy Farmer™ fermented compost and lightly mix together with soil. Finally, fill the remaining 1/3 of the container with potting soil and cover with a dark plastic sheet. Wait two weeks before planting your favourite veggies etc.

Using a conventional composter

- soil
- Happy Farmer™ Fermented Compost
- Soil
- Happy Farmer Bokashi : 1 Lb



Caution : It is important that the plant roots do not touch the compost directly. Most animals are attracted to the odor of fermented compost and may dig it up. So you need to bury them in a foot deep or more.