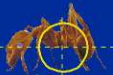


ST. GABRIEL LABORATORIES

Sharp Shooter

MADE FROM PLANT OILS



**NEW &
IMPROVED
FORMULA!**

KILLS HOUSEPLANT & GARDEN BUGS

Ants (including fire ants)
Aphids
Earwigs
Mosquitoes
Whiteflies

Active Ingredients

Clove Oil	0.3%
Peppermint Oil	0.25%
Sodium Lauryl Sulphate	1.0%

Inert Ingredients

(Mineral Oil (USP), Citric Acid, Lecithin, Gum Arabic, Water)	98.45%
--	--------

Total..... **100.0%**

READY-TO-USE

KEEP OUT OF REACH OF CHILDREN

See back panel for additional precautionary statements.

24 Fl. Oz. (710 ml)

FOR USE IN AND AROUND THE HOME AND GARDEN

DIRECTIONS FOR USE
USE THIS PRODUCT IN A MANNER
CONSISTENT WITH ITS LABELING.

**Sharp
Shooter**
READY TO USE

SHAKE WELL BEFORE USING.

Spray when insects first appear. Hold container 12"-18" from plant and spray upper and lower leaf surfaces until run-off. Wet as many insects with spray as possible. Be sure to penetrate dense foliage. Treatment may be repeated weekly or as needed to control infestation. Avoid spraying plants in hot midday sun. When used outdoors, spray when air is still.

This product has been tested on many plants; however, it is wise to spray new plants individually and observe for 48 hours. Do not spray on open blooms and do not spray wilted plants.

Do not use in conjunction with other sprays such as spray-on liquid fertilizer and other pesticides. Do not spray on red mature fruit such as raspberries or strawberries. Do not spray at temperatures over 90°F. Early morning or evening spraying is best.

ST. GABRIEL LABORATORIES

14044 LITCHFIELD DRIVE
ORANGE, VIRGINIA 22960
(800) 801-0061



6 99064 20030 5

DIRECTIONS CONTINUED...

USE on Vegetables and Fruits including: Asparagus, beans, broccoli, Brussels sprouts, cabbage, carrots, cauliflower, celery, collards, corn, cucumbers, eggplants, grapes, greens, kale, lettuce, peas, peppers, potatoes, radishes, spinach, squash, tomatoes, turnips, pumpkins, melons, zucchini, etc.

USE ON HOUSEPLANTS, FLOWERS, TREES AND SHRUBS including: (Test small area on plant to check sensitivity) Asters, azaleas, begonias, boxwood, camellias, carnations, chrysanthemums, dahlias, dieffenbachia, dogwoods, ferns, fuchsias, geraniums, gladioli, hemlocks, hibiscus, holly, iris, ivy, jade plants, junipers, lilacs, maple, marigolds, oak, pepperomia, petunias, philodendron, rhododendrons, roses, rubber plants, salvia, snapdragons, spruces, tulips, wandering jews, etc., and fruit trees; such as: apples, bananas, cherries, figs, grapefruits, kiwi, lemons, limes, oranges, pears, plums, etc.

USE to control the following insects:

Ants (including fire ants), aphids, cabbage loopers, caterpillars, eastern and forest tent caterpillars, crossed-striped cabbageworms, cutworms, diamond-back moth larvae, earwigs, fireworms, flies, gnats, gypsy moth caterpillars, harlequin bugs, imported cabbageworms, lacebugs, leafhoppers, leaf rollers, loopers, mealy bugs, mites, moths, scales, snails/slugs, whiteflies, and mosquitoes, etc.

PRECAUTIONARY STATEMENTS

CAUTION: May cause eye irritation. Do not get in eyes, on skin, or on clothing. In case of contact, hold eyelids open and flush with a steady, gentle stream of water for 15 minutes. Get medical attention if irritation occurs or persists. Wash thoroughly with soap and water after handling.

KEEP OUT OF REACH OF CHILDREN

FIRST AID

IF IN EYES: Hold eyelids open and flush with a steady, gentle stream of water for 15 minutes. Get medical attention if irritation persists or occurs.

IF SWALLOWED: Call a doctor or get medical attention.

IF ON SKIN: Wash with plenty of soap and water. Get medical attention if irritation occurs or persists.

STORAGE AND DISPOSAL

Do not contaminate water, food or feed by storage or disposal.

STORAGE: Keep from freezing. Store only in original tightly sealed container and out of reach of children.

PESTICIDE DISPOSAL: Securely wrap original container in several layers of newspaper and discard in trash.

CONTAINER DISPOSAL: Do not reuse container (bottle). Rinse thoroughly before discarding in trash.

CONDITIONS OF SALE

Buyer assumes all responsibility for safety and use not in full accordance with directions for use.